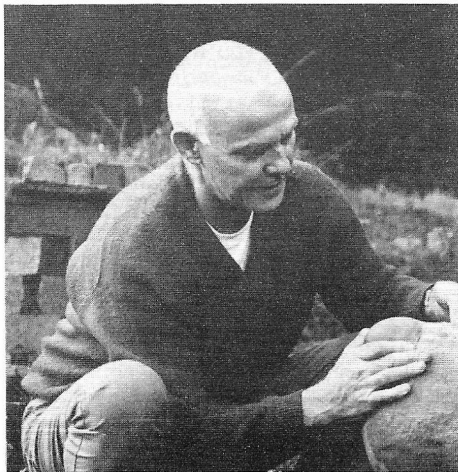


# MASTER MODEL RAILROADER #105 HAL RIEGGER

Master Model Railroader #105 is Hal Riegger of Penn Valley, Calif. Hal is single and retired. He has a B.S. cum laude in Ceramic Arts from the New York State College of Ceramics at Alfred, N.Y., and earned an M.A. in the same subject from Ohio State in 1946. Primarily a teacher at the college level, Hal was also a produc-



**HalRiegger**

ing ceramic artist/sculptor. From 1962 until his retirement in 1977, Hal conducted primitive pottery workshops in the field at such places as Death Valley, Calif., Jerome, Ariz., and British Columbia.

Hal came to the hobby relatively recently, when he helped a youngster buy a set of HO trains in 1972. He was much more intrigued with the N scale equipment he saw than with HO, and bought some for himself. Two ex-WP MofW cars now house Hal's large N scale layout plus his library and work area, and provide sleeping space for visitors. Hal's work in heavy electric N scale is well known to most modelers, and his layout is quite complex electrically: sound, automatic block signals, live overhead, crossing bells and lights. As an artist, Hal is now considering a simpler approach and may start over with SP narrow gauge.

Hal was on the N Scale Standards Committee, and is clinic chairman for the 1986 PCR convention in Grass Valley, Calif. He has written two books, *THE KETTLE VALLEY AND ITS RAILWAYS* and *THE CAMAS PRAIRIE*, and authored numerous articles for the hobby press. He received his MMR award after earning achievement certificates for Motive Power, Scenery, Civil Engineering, Electrical

Engineering, Chief Dispatcher, Volunteer, and Author.

An artist's eye and sensitivity and a lack of preconceptions about the hobby have helped Hal accomplish a great deal. It never occurred to him to use paint or plastic to represent earth or foliage; he used real dirt, sand and gravel. He didn't know it was impossible to build working overhead in N scale; he just went ahead and built it. (Much to the consternation of many NTrak viewers who refused to believe it could be done, even with the evidence right before their eyes!) Hal's main interest is scenery, and he likes to speak of making scenery "convincing" rather than "exact scale." As he puts it, "... scenery, with the attendant artist's use of color and space has no guidelines such as a drawing for building a locomotive, and most modelers will shy away from scenery because they don't know how to approach the challenge. As an artist, I will know that not always is the accurately scaled thing the most realistic (convincing), but that one must take certain liberties, make certain exaggerations or suppressions to make model scenery come across as convincing. I constantly hope that more modelers will not only see and understand this, but will accept it."